

5-inch PTZ Camera

Quick Start Guide

Safety Requirements

Installation Requirements

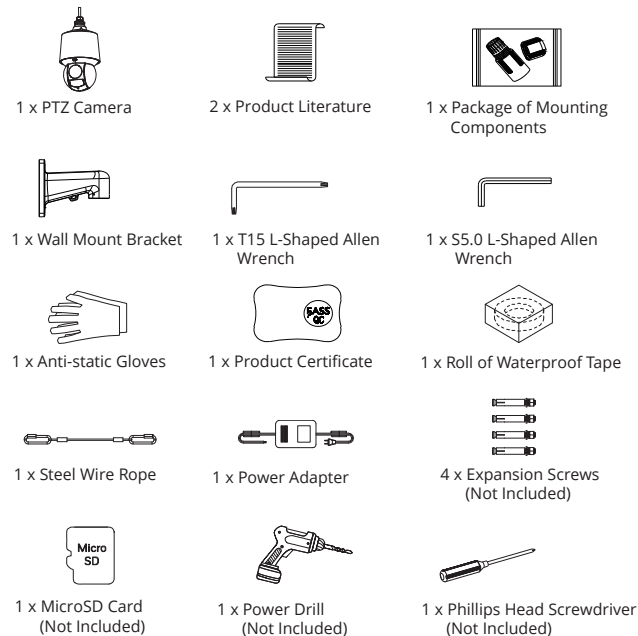
- Comply with all local electrical safety codes and standards when operating the product.
- Check if the power supply is correct before operating the product.
 - Follow the electrical requirements to power the product. Requirements for selecting a power adapter:
 - The power supply must conform to the IEC 60950-1 and IEC 62368-1 standards.
 - The voltage must meet SELV (Safety Extra Low Voltage) requirements and not exceed ES-1 standards.
 - The power supply must meet LPS requirements and not exceed PS2.
 - We recommend using the power adapter provided with the product.
 - The power supply requirements (such as rated voltage) are subject to the product label.
- Do not connect the product to more than two power supplies unless otherwise specified.
- The product must be installed in a location only professionals can access to avoid the risk of non-professionals becoming injured from accessing the area while the product is in operation. Professionals must have full knowledge of the safeguards and risks when using the product.

Operation Requirements

- Do not open the cover when the product is powered on.
- Do not touch the heat dissipation component of the product.

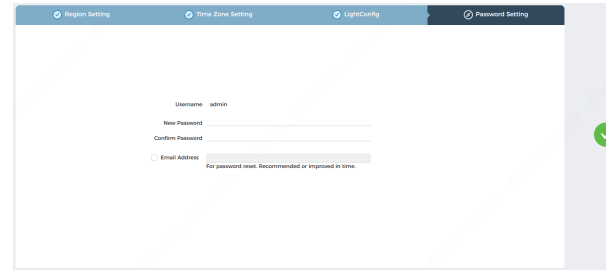
Packing List

Check the items below to make sure every installation part is included and in proper condition.



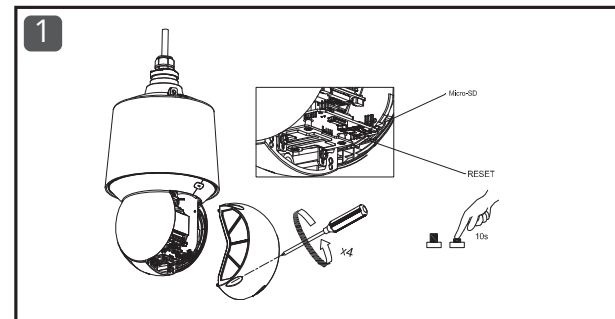
Device Initialization

- 1 Enter the camera's IP address in the browser address bar. Chrome and Firefox are recommended.
- 2 Follow the on-screen instructions to complete the initialization process.

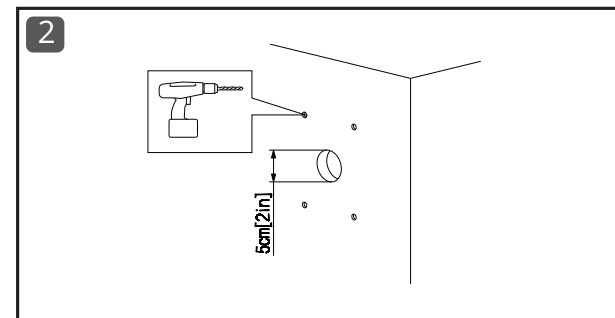


Installation Steps

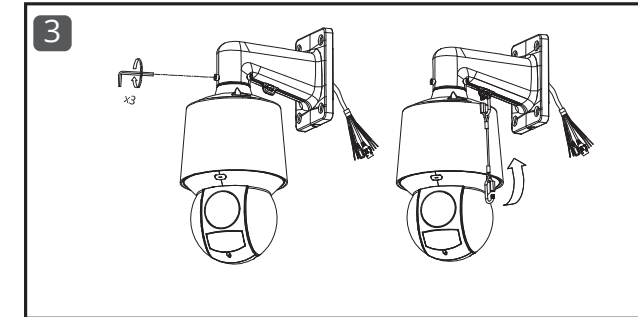
Remove the camera's cover and insert your MicroSD card. To reset the camera, press the reset button for 10 seconds.



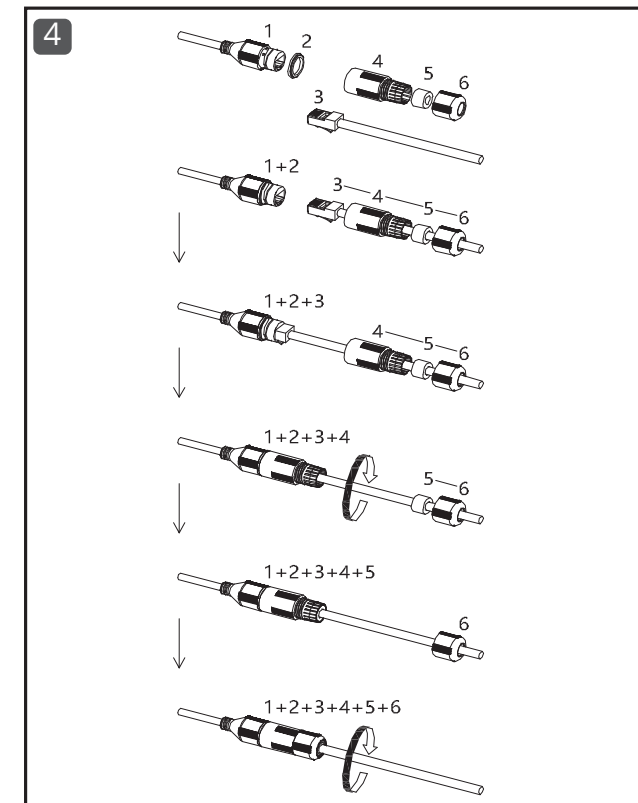
Drill the installation holes for the camera's mount. Cut a hole 5 cm (2 in.) in height to thread the camera's cables through.



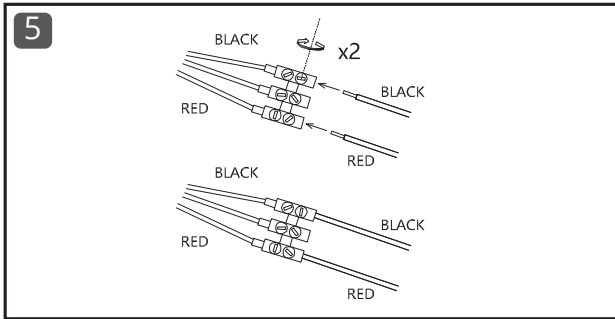
Feed the wires through the mount. Attach the camera to the mount with the S5.0 L-shaped Allen wrench. Attach the steel wire rope to the camera and mount.



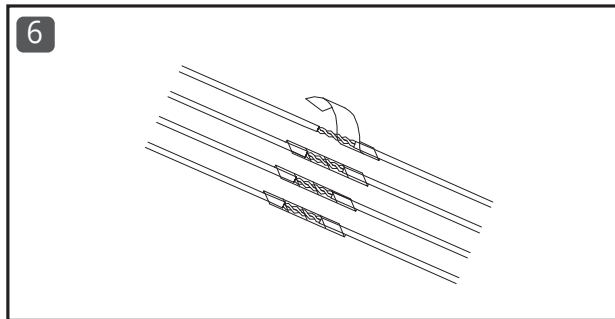
Connect the camera's wiring. Attach 1 and 2 together. Feed 3 through 4/5/6. Insert 3 into 1+2. Secure 4 to 1+2+3. Insert 5 into 1+2+3+4. Screw 6 into 1+2+3+4+5.



Insert the red and black wires into their housings. Secure the wires by turning the lock twice.



Wrap the connection points in waterproof tape.



Screw the mount into the desired location with the provided screws.

